



# IUC-JU

Phase I Partner Programme

AP2007



# Pre-Partner Programme Results

- Main objectives in pre-partner programme
  - Development of Phase I partner programme and AP2007 based on
    - Matchmaking and formulation missions
    - Training, e.g. PCM and accounting
    - Workshops JU and with MU
  - Installation of IUCN secretariat, purchase of vehicle
  - Purchase of servers and Intranet
  
- September 2006: Internal workshop JU to prepare and finalise IPP



13/09/2006 1:10 pm

15/09/2006 10:27 am



# Pre-Partner Programme Lessons learned



- High staff turnover at all hierarchical levels makes implementation sometimes difficult
- Purchase (both from within and from outside the country) of goods for the IUC has been very difficult



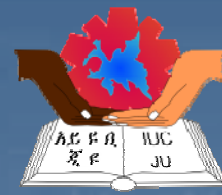
# Phase I PP design: objectives (1)

- Main theme

Investigating the Impact of Gilgel Gibe Dam  
A Multidisciplinary Approach towards Capacity Building

- Overall academic objective (OAO):

To enhance the quality of teaching and research undertaken at Jimma University (JU) through planned and targeted development of human resources and collaborative and multi-disciplinary research of an international standard that addresses the priority problems of the local community and the country at large.



# Phase I PP design: objectives (2)

- Overall developmental objective:

To improve the life of people in the Gilgel Gibe dam area and promote sustainable development through research in problems and issues of human and animal health, environmental health and ecology, food and nutrition and soil fertility and promoting evidence based interventions in the target area in collaboration with different stakeholders.



# Phase I PP: formulation process (1)

- Research proposal builds on existing research
- Ask for research proposals (demand driven from within JU)
- Following selection criteria were used
  - Research theme fits in the multidisciplinary approach and addresses an important problem in society.
  - Critical capacity on research theme exists at JU
  - Expertise on Flemish side in research theme exists
  - The research theme possibly leads into opportunities for development of new or support of existing Master programmes.



# Phase I PP: formulation process (2)

- The following 6 research themes were withheld for IPP development
  - Zoonotic and animal diseases.
  - Child health and nutrition.
  - Environmental health and ecology.
  - Epidemiology and modelling.
  - Soil Fertility.
  - HIV/Aids
- After internal workshop September 2006, Research Coordination project was added



# Phase I PP: formulation process (4)

- During matchmaking mission, Flemish academics found for all projects, also projectleaders, except for HIV/Aids
- HIV/Aids project merged with Epidemiology and modelling project
- From formulation visit until May 15, AP and PP was written. All projects fully developed except
  - Infectious diseases part (HIV/Aids, Tuberculosis, malaria) of Epidemiology and Modelling project
  - Library part of ICT-Library project



# Phase I PP: Expected Academic results

- Increase research and scholarly outputs of the University by undertaking collaborative and multidisciplinary research projects.
- Improving culture of research by involving many staff in research projects
- Enhancing the quality of teaching and learning in JU
- Training staff at masters and Ph D levels
- Creating centers of excellence in selected areas of the research projects
- Enhancing implementation of CBE in the community
- Increase analytical, methodological and publishing skills of the staff involved in the research projects



# Phase I PP: Expected Developm. results

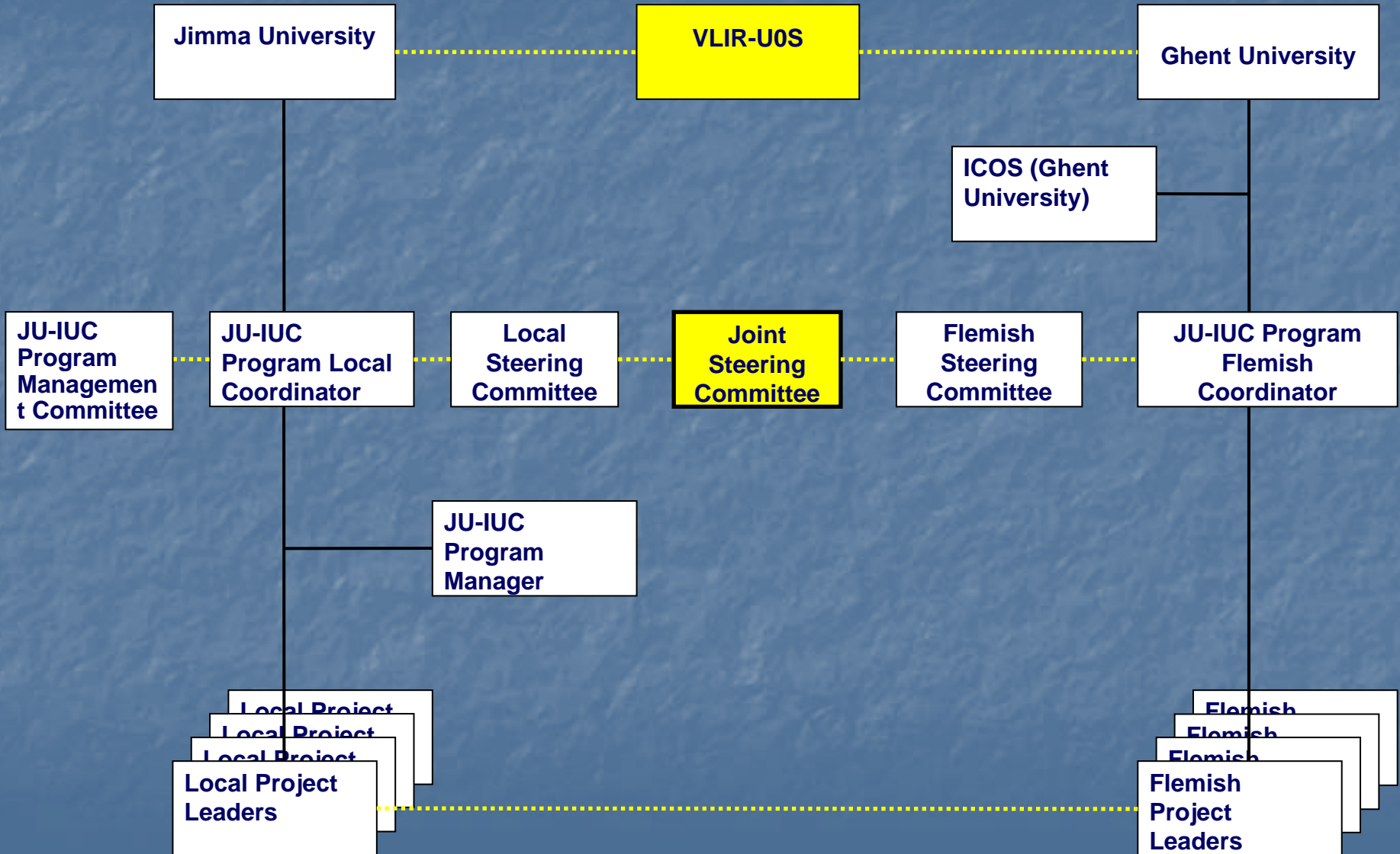
- Reduce morbidity and mortality from diseases (malaria, AIDS, TB) prevailing among community in dam region.
- Improve agricultural production and nutritional status
- Address the issues of erosion and environmental degradation thereby prolonging the economic life of the dam.
- Design evidence based interventions that would enhance the effectiveness and efficiency of health and development programs provided in the community by GOs, NGOs and others.
- Enhance the ICT and library facilities
- Establish CRCs that provide access to ICT services to community in Gibe area



## Phase I PP: Other expected results

- Contributes to staff retention efforts of JU
- Boosts the size, quality and impact of research outputs and publications
- Raises JU's potential for collaboration and networking with other partners
- Enhances culture of multidisciplinary and team research in the University.
- Supports government's goal of expanding graduate programs in the country
- Increases research funding level
- Links will be established with other IUCs within and outside Ethiopia

# Overall Management Structure





# JU-IUC Partnership Programme Management

- LSC is responsible for monitoring the implementation of the programme including the setting of policies, procedures and guidelines such as:
  - Vehicles and common resources use policy
  - Work load policy of staff on scholarship
  - Programme staff administration guideline
  - IUC projects financial administration handbook
  - Authorship and publication policy
  - Research data resources management policy
  - Others



# JU-IUC Partnership Programme Management

- The LSC membership include:
  - Programme Coordinator.....chairperson
  - Project Leaders.....member
  - Project Manager.....Secretary
  - Public and External Relations  
Office...member
  - Others.....member



# JU-IUC Partnership Programme Management

- At programme operations level:
  - At the management level, the Programme is run by a programme manager recruited competitively in the south and ICOS officer in the north
  - Programme Management Committee (PMC) is established to facilitate effective implementation of management and logistic issues of the Programme



# JU-IUC Partnership Programme Management

- PMC is chaired by the Coordinator and its membership includes:
  - Programme coordinator.....Chair
  - Programme Manager.....Secretary
  - Head of Finance Dept.....Member
  - Head of Procurement and Property Administration Dept..Member.....member
  - Others.....Member



# JU-IUC Partnership Programme Management

- North-south joint steering committee:
  - The two steering committees in the north and south meet once a year.
  - Mainly responsible for evaluating the progress of the programme and tackling overall issues that affect both the north and south.



# JU-IUC Partnership Programme Management

- Composition of the Joint Steering Committee (JSC) is:
  - The two programme coordinators
  - Project leaders in the south and north
  - Programme Manager
  - The ICOS (of Gent University)



# Budget AP2007 implementation

	B.	C.	D.	E.	F.	G.	H.	Total
Project 1: Zoonotic and animal diseases	16,000	34,942	0	19,670	4,800	4,200	4,000	<b>83,612</b>
Project 2: Child health and nutrition	20,687	17,503	0	20,394	10,790	14,238	0	<b>83,612</b>
Project 3: Environmental health and ecology	23,732	39,695	0	19,695	11,760	4,336	3,500	<b>102,718</b>
Project 4: Epidemiology and modelling	8,708	2,410	0	28,500	14,300	8,800	0	<b>62,718</b>
Project 5: Soil fertility	22,225	13,968	0	10,551	8,820	3,252	913	<b>59,729</b>
Project 6: ICT and library	2,100	5,950	0	8,168	4,500	3,692	0	<b>24,410</b>
Project 7: Research co-ordination	3,834	20,037	0	0	7,800	4,176	0	<b>35,847</b>
PSU	40,000	11,250	2,250	0	5,200	2,400	0	<b>61,100</b>
<b>TOTAL</b>	<b>137,286</b>	<b>145,755</b>	<b>2,250</b>	<b>106,978</b>	<b>67,970</b>	<b>45,094</b>	<b>8,413</b>	<b>513,746</b>

**K1: 16,875**

**K2: 28,125**

**558,746**

# Revisions to budget AP2007



- 15,000: Difference K1-K2 lump sums
- 9,220: Difference project leaders and Flemish coordinator lump sum
- 5,568 (of 7,600) lump sum of coordinator
- 450 salary bookkeeper from K2
- 8,780 investment costs of Project 4
- 20,000 car purchase (shift to year zero)



# Budget AP2007 revised

	B.	C.	D.	E.	F.	G.	H.	Total
Project 1: Zoonotic and animal diseases	16,000	32,532	0	19,670	4,800	4,200	4,000	<b>81,202</b>
Project 2: Child health and nutrition	20,687	15,093	0	20,394	10,790	14,238	0	<b>81,202</b>
Project 3: Epidemiology and modelling	23,732	0	0	19,695	11,760	4,336	3,500	<b>51,600</b>
Project 4: Environmental health and ecology	8,708	37,285	0	28,500	14,300	8,800	0	<b>100,308</b>
Project 5: Soil fertility	22,225	11,558	0	10,551	8,820	3,252	913	<b>57,319</b>
Project 6: ICT and library	2,100	3,540	0	8,168	4,500	3,692	0	<b>22,000</b>
Project 7: Research co-ordination	3,834	17,627	0	0	7,800	4,176	0	<b>33,437</b>
PSU	20,000	13,332	1,800	0	5,200	2,400	0	<b>42,732</b>
<b>TOTAL</b>	<b>108,578</b>	<b>130,967</b>	<b>2,250</b>	<b>106,978</b>	<b>67,970</b>	<b>45,094</b>	<b>8,413</b>	<b>469,800</b>

**K1: 11,300**

**K2: 18,900**

**500,000**



# Time plan of AP2007 implementation

- July 1, Start AP2007
- July, visit Zoonotic and Animal diseases to JU
- September 20 Public Launch
- September
  - Week of September 20 JSCM
  - Preparation of AP2008
  - Visits of all projects except ICT and Vet. Sci.
- November
  - Course and setup on database management (MySQL)
  - Courses and setup of GIS (GRASS)